

Saint Mary's Cemetery

Lot Report



Lydia Hamilton Smith Plot

Section 2, Row 6, Gravestones 17 & 18

By: André Dominguez

Date: June 2023

Copyright © 2023 by author

Lancaster, Pennsylvania

All Rights Reserved. No part of this report
may be reproduced, in any form or by any means,
including electronic reproduction or reproduction
via the Internet, except by permission of the author.

Made in the United States of America

Table of Contents

	Page
Introduction	1
Saint Mary's Cemetery Description	2
Soil Survey	3
Lydia Hamilton Smith Plot Location	4
Lydia Hamilton Smith Short Bio	5
Assessment of Gravestones:	
o General Configuration	6
o Stone #1 (Lydia Hamilton Smith).....	9
o Stone #2 (Isaac and William Smith).....	11
Treatment:	
o Permission To Do Work, Notification, Work Performed by, Weather, Date/Time	13
o Stone #1 (Lydia Hamilton Smith) Treatment.....	14
o Stone #2 (Isaac and William Smith) Treatment.....	23
o As-Left Photos	27
o Final Cleanup	28
o Ground Marker	29
o Ground Treatment.....	30
Follow-up	30
Sign Installation.....	31
Attachments:	
A – Lydia Hamilton Smith Field Survey Sheets	33
B – Isaac and William Smith Field Survey Sheets	37
C – Permission To Do Work Agreement	41

Page intentionally blank.

Introduction

This restoration and leveling of the Lydia Hamilton Smith plot was part of the Lydia Hamilton Smith & Sons Commemoration Project. The work was performed at the request of the Lancaster History African American Historical Society of South Central Pennsylvania, under the management of Randy Harris. This project consisted of two parts as follows:

1. Stabilize and Level the two gravestones in this plot.
2. Design, purchase and install a commemorative marker.



New Holland Avenue Entrance to Saint Mary's Cemetery

Saint Mary's Cemetery Description

Saint Mary's Cemetery is a 10.3-acre active religious cemetery that contains approximately 4,200 graves located within the city limits of Lancaster, Pennsylvania at 401 New Holland Avenue. It shares a common border with the Lancaster Cemetery to the south-west. It is bordered on the south-east by New Holland Avenue and on the north-west by Park Avenue. The north-east is bordered primarily by residential properties. The most famous person buried in this cemetery is Lydia Hamilton Smith, whose plot is the subject of this report.

About the year 1857, Mr. Michael Malone, a canal and railroad contractor¹, donated six acres of ground to Saint Mary's Church. This ground was on the New Holland Turnpike, adjoining Lancaster Cemetery. Improvements were commenced in March, 1858, and the grounds were beautifully laid out and ornamented with evergreens and other trees.² The cemetery was laid out by Saint Mary's Roman Catholic Church to replace the graveyard next to the church in the downtown Lancaster area. In 1882, the remains of those who were buried in the old graveyard were disinterred and removed to the southeast corner of

¹ Michael Malone, obituary, *Intelligencer Journal*, Lancaster, Pennsylvania, Tuesday, 25 May 1880, p. 2, c. 4.

² Franklin Ellis & Samuel Evans, *History of Lancaster County, Pennsylvania, with Biographical Sketches of Many of its Pioneers and Prominent Men* (Philadelphia: Everts & Peck, 1883), pp. 524-525.

St. Mary's Cemetery, Lancaster, Pennsylvania – Section 2, Row 6, Gravestones 17 & 18

the original new cemetery.³ On 5 June 1924, Richard M. Reilly and his wife Ruth, sold 4.3 acres of land to the Right Reverend Philip R. McGeritt for \$1.00⁴ and the cemetery expanded to its current dimensions. In 1925 the cemetery association was chartered by the Lancaster County courts⁵ and is currently owned by Right Reverend Chas. J. Tighe.⁶

Contact information for Saint Mary's Cemetery is as follows:

Patrick Eichelberger, Manager

170 Charles Road

P.O. box 127

Bausman, Pennsylvania 17504

Ph: (717) 394-2231

Soil survey

Lancaster City is located in the Lancaster-York-Hanover Valley of the Lancaster-Frederick Lowland. The valley elevation ranges from 300 to 400 feet. The underlying rocks are limestone and dolomite. The areas are underlain by impure limestone and have broad, well-rounded, even slopes and few sinkholes. Lancaster soil association is No. 8 (Conestoga-Hollinger). The soils in this association developed from micaceous, i.e., of or relating to mica, and graphitic Conestoga limestone. The topography is undulating to rolling, characterized by broad, gently rolling slopes. The soils are deep and well-drained to somewhat poorly drained, and consist of deep, well-drained soils underlain by micaceous limestone. It is easily worked, highly productive, and high in moisture-holding capacity. The native vegetation was a forest of oaks, hickories and poplars.⁷

The soil around the two gravestones in this plot was void of any vegetation due to the heavy use of an herbicide.

³ Franklin Ellis & Samuel Evans, *History of Lancaster County, Pennsylvania, with Biographical Sketches of Many of its Pioneers and Prominent Men* (Philadelphia: Everts & Peck, 1883), p. 463, column 2, top.

⁴ Lancaster County deed, book U26, pp. 481-481.

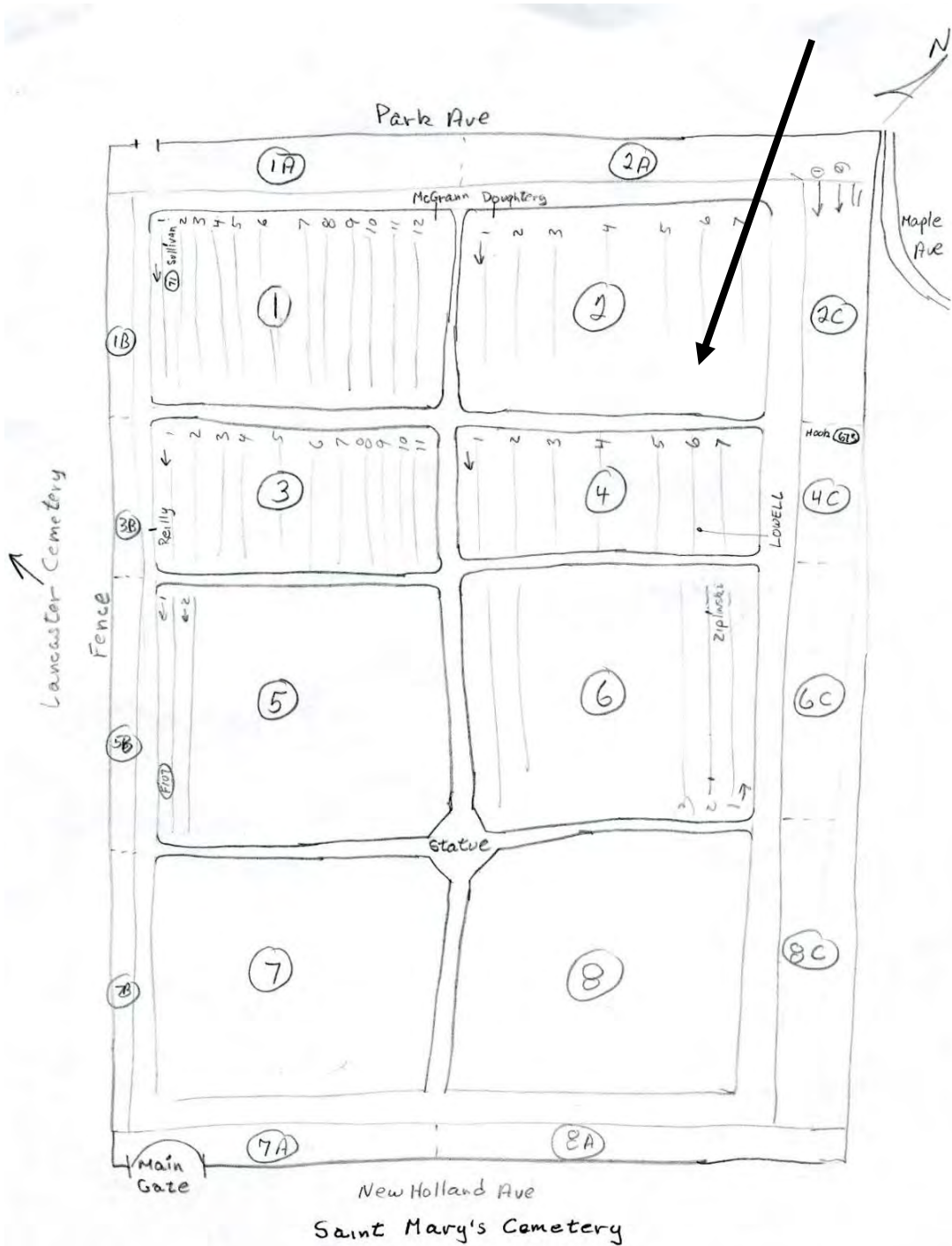
⁵ A. Hunter Rineer, Jr., *Churches and Cemeteries of Lancaster County, Pennsylvania, A Complete Guide* (Lancaster, Pennsylvania: Lancaster County Historical Society, 1993), p. 207.

⁶ The Lancaster County Geographic Information public access information Website, *LanCo View Version 2.0* : accessed 3 April 2023).

⁷ *Soil Survey, Lancaster County Pennsylvania, Series 1958, No. 4* (The Pennsylvania State University: United States Department of Agriculture, Soil Conservation Service, 1959), pp. 2, 8, 10 & 30.

Lydia Hamilton Smith Plot Location

Lydia Hamilton Smith Plot



Note: The section designations are from William Frederick Worner Tombstone Transcriptions, Vol. 19, No. 330.

Lydia Hamilton Smith Short Bio

Lydia Hamilton Smith was the housekeeper, property manager, and confidant of Thaddeus Stevens ("The Old Commoner", U.S. Congressman, and father of the 14th Amendment). Her mother was a free mulatto woman of European and African descent, and her father was Irish. Owing to her long and faithful service as housekeeper for the Hon. Thaddeus Stevens, Mrs. Smith had a national reputation.

When quite young, she married a barber and musician named Smith, a free full-blooded African American, who turned out to be a worthless fellow who ill-treated her. Lydia and her husband separated after their two sons, Isaac and William, were born. Around 1846, Thaddeus Stevens, who was living in Lancaster at the time, and who Lydia and her mother knew when he was an attorney and abolitionist in Gettysburg, offered Lydia the position as his housekeeper.⁸ Mrs. Smith succeeded several unfit housekeepers for Thaddeus Stevens and proved that she could manage his household affairs exceptionally well. When he was elected to Congress, Thaddeus took Lydia to Washington with him. He placed the most implicit confidence in her and up to the day of his death, she directed the affairs of his bachelor establishment and ministered to his personal wants.

In her youth, Mrs. Smith was a beautiful quadroon. Her features were finely cut, her lips thin, her hair was long, abundant and wavy, and her skin had a light-gold tint. Even in her later years she retained many traces of her former beauty. She had received no formal education, but she was a remarkably intelligent woman of generous disposition, and was well and favorably known. Among the people of Washington, D.C., white and African American, she was respected highly, a fact which one can conclude by the large number of people who attended her funeral services at St. Augustine's Catholic Church. She died in possession of considerable property, including the Stevens homestead and several other houses in Lancaster. She was generous to a fault, never being able to resist an appeal for help, and many were the deeds of kindness she performed during her life. Her death was sincerely mourned by many friends.⁹

⁸ Mrs. Lydia Smith, obituary, *Lancaster New Era*, Lancaster, Pennsylvania, Friday, 15 February 1884, p. 4, c. 1.

⁹ A Noted Woman Gone, obituary, *Lancaster Examiner*, Lancaster, Pennsylvania, 20 Feb 1884, p. 6, c. 3.

Assessment of Gravestones:

Date: 9 November 2022

NOTES:

1. All locations, i.e., right and left, are as facing the front of the gravestones.
2. For additional details, see the field survey sheets for gravestones of Lydia Hamilton Smith and her two sons, Isaac and William, in attachments A and B at the end of this report

O General Configuration

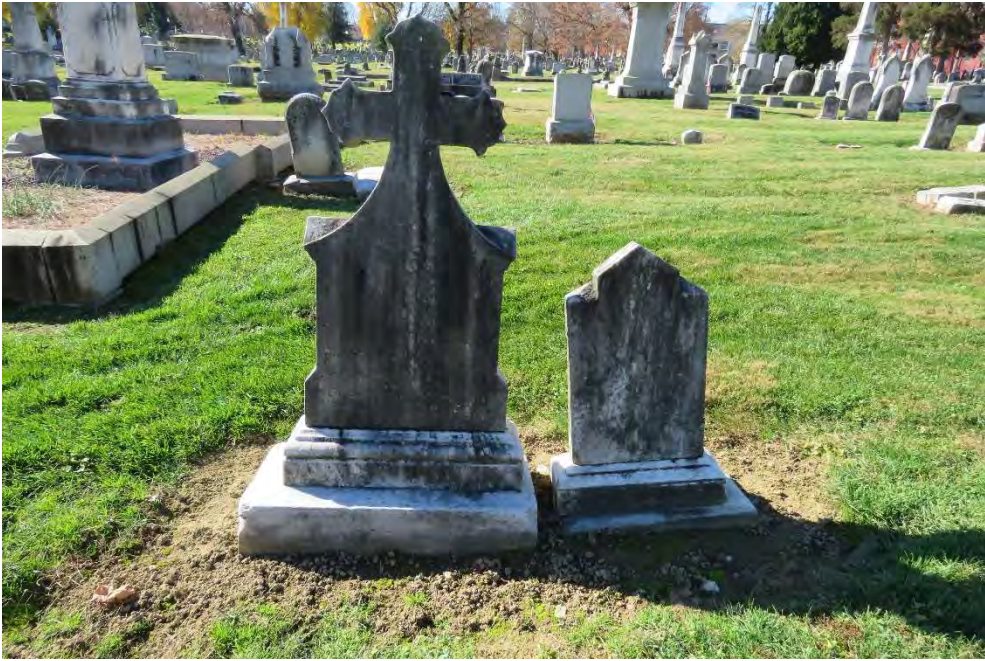
This plot consists of two gravestones each attached to a separate tier, resting on individual bases aligned in a straight line. Both stones are leaning and tilting, as can be seen in the photos below. The tiers have slid a few inches off their bases which have sunk several inches into the ground. Both stones are dirty and weathered. The condition of the Isaac and William Smith stone is poor, rendering the engraving almost unreadable. The Lydia Hamilton Smith stone is very readable.

St. Mary's Cemetery, Lancaster, Pennsylvania – Section 2, Row 6, Gravestones 17 & 18

As Found Photos



Front



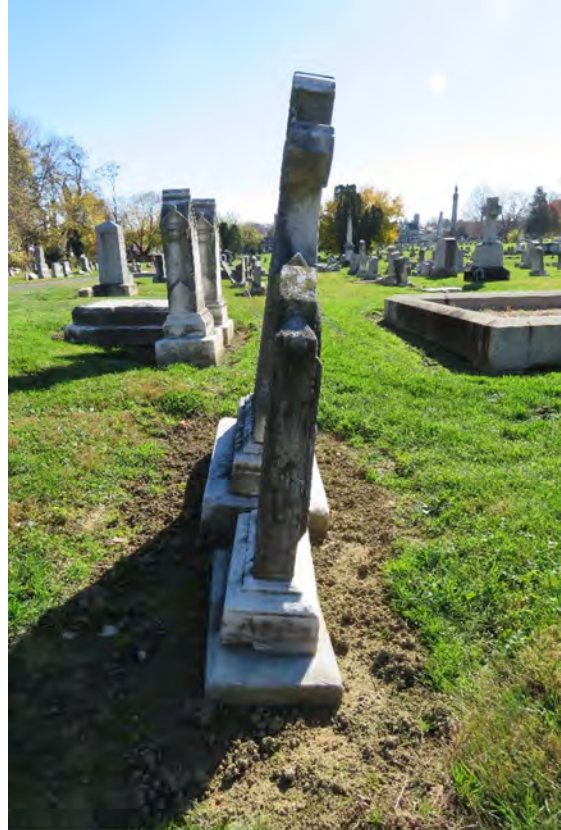
Back

St. Mary's Cemetery, Lancaster, Pennsylvania – Section 2, Row 6, Gravestones 17 & 18

As Found Photos



Right Side

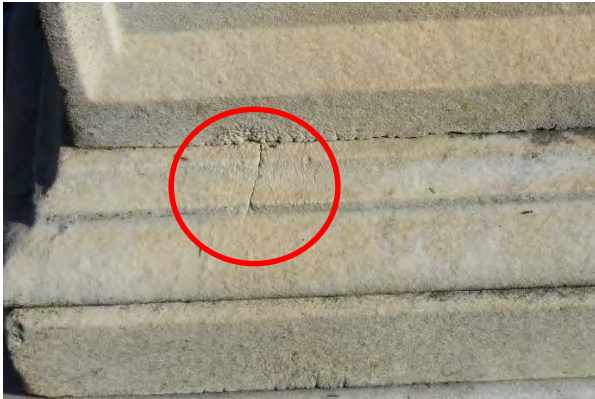


Left Side

St. Mary's Cemetery, Lancaster, Pennsylvania – Section 2, Row 6, Gravestones 17 & 18

O Stone #1 (Lydia Hamilton Smith)

The Lydia Hamilton Smith stone is tilting front at an unsafe angle (12°). The die is also loose in the tier. It can be moved slightly back and forth with mild force. Cracking exists in the tier at both pin locations. (See photos below.)



Stone #1 Front: Cracking at Pin Locations and quartz Inclusion

Quartz
Inclusion



Stone #1 Rear: Cracking at Pin Locations

St. Mary's Cemetery, Lancaster, Pennsylvania – Section 2, Row 6, Gravestones 17 & 18



Stone #1: Tier – Right Side Quartz Inclusion Area

Also, chips are missing from the base at each corner. The most significant are at the rear of the base. (See photo below)



Stone #1 Base Rear: Corner Chips Missing

O Stone #2 (Isaac and William Smith)

This stone is tilting front but not as severely as Lydia's stone. The die is loose in the tier. It can be moved slightly back and forth with mild force. There is no evidence of cracking at the pin locations. There is a significant piece missing from the left rear corner of the tier. See photo below. In addition, there is noticeable flaking on the rear of the die.



Stone #2: Tier – Left Side missing chip



Stone #2: Flaking on Rear of Die

Treatment

O Permission to Do Work, Notification, Work Performed By, Weather, Date/Time

- **Permission to Do Work:**

Since no living descendants of Lydia Hamilton Smith could be located, only from the permission to do work Saint Mary's Cemetery was sought. See Attachment C for a copy of the agreement from Patrick Eichelberger, Saint Mary's Cemetery Manager, for permission to do the work.

- **Notification:**

Patrick Eichelberger was personally notified by André Dominguez that the work would be performed on 3 June 2023.

- **Work Performed By:**

Robert Mosko, performed the work. Robert's contact information is as follows.

Robert Mosko, Chief Conservator
Mosko Cemetery Monument Services
555 Baltimore Street
Hanover, PA
Ph: (866) 434-7176
Ph: (717) 633-8092

He was assisted by Robert Maust and Andre Dominguez.

- **Weather:**

Low: 55°F; High: 81°F; Wind: ENE 10-20 mph; no rain and none forecasted for next three days.

- **Date/Time:**

Work commenced on Saturday, 3 June 2023 at 10:00 AM and completed at 6:30 PM.

O Stone #1 (Lydia Hamilton Smith) Treatment

Note: Pictures of the below treatment are at the end of this section.

- **Stone #1 Die & Tier Removal**

Stone #1 was draped with a folded tarp to protect it from being scraped while positioning the rigging equipment. A gantry on two telescopic aluminum tripods was assembled over the stone #1. See rigging assembly pictures below. A sling was attached to the stone and hooked to the main hoist. The stone was lifted and the die and tier raised off the base. Initially there was a slight gap between the rear of the die and the tier due to rust-jacking of the pins. No additional separations occurred during the lift. The die and tier were moved away from the base using the trolley and placed on shoring.

- **Stone #1 Pin Assessment**

Since the die and tier did not separate enough during the move to insert a saw blade to cut the pins, it was decided not to attempt to separate them and replace the pins. Separating the die further from the tier would most likely have caused some damage to the stone. The die will be stabilized using mortar after the die/tier unit is set back on the base.

- **Stone #1 Base Removal**

The soil around the base was excavated to expose the bottom of the base. During the excavation a metal ground marker stating "ANNUAL CARE" was discovered in the ground at the back center of the base. The ground marker was removed. A sling was attached around the base and raised by the main hoist. Two pieces of shoring were placed under the base which was then lowered on them. The base was re-rigged, raised and trolleyed out of the way. During the excavation two red bricks were discovered at odd angles. These bricks had been displaced as the gravestone sank into the soil.

- **Stone #1 Foundation**

The space under the base was excavated further, and two and a half 0.5 Cu. Ft. bags of drainage rock were placed in the hole. The base was then trolleyed back to its original position and leveled. The top of the base was cleaned with water and a bristle brush.

St. Mary's Cemetery, Lancaster, Pennsylvania – Section 2, Row 6, Gravestones 17 & 18

- **Stone #1 Die/Tier Gap Cleaning**

The space between the die and tier was flushed with water and a putty knife was slid between the surfaces. This procedure was repeated until only clear water came from the space. In addition to dirt, thin metal strips of pressed lead were removed as well as specks of yellow sulfur, including a small ½ inch diameter nugget from a pin pour spout. The bottom of the tier was cleaned with water and a bristle brush.

- **Stone #1 Die/Tier and Setting**

The die/tier unit was trolleyed and placed on the base. Four thin plastic shims were placed on the corners of the flat portions of the base and the die/tier unit was then lowered on to the base. To stabilize the die on the tier and to limit further degradation of the setting pins and the sulfur they were set in, the gap between the die and tier was filled with a mix of Lithomex Antique Marble tinted with gray. Excess Lithomex was removed and after drying sufficiently any remaining Lithomex was removed with a wet sponge. The same procedure was performed where the die/tier unit mated to the base.

- **Stone #1 Cleaning**

The die, tier and base were thoroughly cleaned at a later date using water and a bristle brush.

St. Mary's Cemetery, Lancaster, Pennsylvania – Section 2, Row 6, Gravestones 17 & 18



Aluminum Tripods & I-Beam



Trolley and One End Hoist attached to I-Beam with Level Attached to Center of I-Beam

St. Mary's Cemetery, Lancaster, Pennsylvania – Section 2, Row 6, Gravestones 17 & 18



Two I-Beam Hoists Attached to I-Beam Ends with C-Clamp Stops & Main Hoist Attached to Trolley



Gantry Completely Assembled

St. Mary's Cemetery, Lancaster, Pennsylvania – Section 2, Row 6, Gravestones 17 & 18



Stone #1 Die & Tier Rigging



Stone #1 Die & Tier Removed and Placed on Shoring

St. Mary's Cemetery, Lancaster, Pennsylvania – Section 2, Row 6, Gravestones 17 & 18



Stone # 1 Base Rigged and Lowered on to Shoring

St. Mary's Cemetery, Lancaster, Pennsylvania – Section 2, Row 6, Gravestones 17 & 18



Stone #1 Base Raised and Base Foot Print Exposed



"ANNUAL CARE" Ground Marker Discovered

St. Mary's Cemetery, Lancaster, Pennsylvania – Section 2, Row 6, Gravestones 17 & 18



Removed Pieces of Pressed Lead and Sulfur Nugget



Stone #1 Base on a Bed of Drainage Rock



Robert Mosko Smoothing Mortar at Die/Tier Joint

O Stone #2 (Isaac and William Smith) Treatment

Note: Pictures of the below treatment are at the end of this section.

- **Stone #2 Die & Tier Removal**

The Stone #2 die and tier unit was significantly lighter than Stone #1. It was manually slid off the base and first placed on its side on two pieces of shoring. To facilitate cleaning the gap between the die and tier, it was lifted to the upright position.

- **Stone #2 Pins Assessment**

Since the die and tier did not separate enough to insert a saw blade to cut the pins, it was decided not to attempt to separate them and replace the pins. Separating the die further from the tier would have most likely caused some damage to the stone. The die will be stabilized using mortar after the die/tier unit is set back on the base.

- **Stone #2 Base Removal**

The base was removed and the sufficient soil removed to create a bed of gravel.

- **Stone #2 Foundation and Base Setting**

Two 0.5 Cu. Ft. bags of drainage rock were placed in the hole. The base was then manually positioned on to two pieces of shoring. The base was manually slid on to the drainage rock bed and positioned so that its left edge was 68" from the right edge of Stone #1 base to accommodate the sign, then leveled. The top of the base was cleaned with water and a bristle brush.

- **Stone #2 Die/Tier Gap Cleaning**

The space between the die and tier was flushed with water and a putty knife was slid between the surfaces. This procedure was repeated until only clear water came from the space. In addition to dirt, pieces of thin metal strips of pressed lead were removed. No evidence of sulfur was found. The bottom of the tier was cleaned with water and a bristle brush.

St. Mary's Cemetery, Lancaster, Pennsylvania – Section 2, Row 6, Gravestones 17 & 18

- **Stone #2 Die/Tier Setting**

The die/tier unit was manually slid first on to wood shoring and then on to the base. To stabilize the die on the tier and to limit further degradation of the setting pins, the gap between the die and tier was filled with a mix of Lithomex Antique Marble tinted with gray. Excess Lithomex was removed and after drying sufficiently any remaining Lithomex was removed with a wet sponge. The same procedure was not performed where the die/tier unit mates to the base due to the large chip missing from the tier back left corner. A complete sealing of the joint between the tier and base was not possible due to the missing chip. The tier was a dry set on to the base at this time, so the large chip can be repaired at a later date. After the corner repair is completed, Lithomex can be applied to the tier/base joint.

- **Stone #2 Cleaning**

The die, tier and base were thoroughly cleaned at a later date using water and a bristle brush.

St. Mary's Cemetery, Lancaster, Pennsylvania – Section 2, Row 6, Gravestones 17 & 18



Stone #2 Die & Tier Unit and Base Moved with New Foundation Bed



Closeup Views of Tier Corner Damage

St. Mary's Cemetery, Lancaster, Pennsylvania – Section 2, Row 6, Gravestones 17 & 18



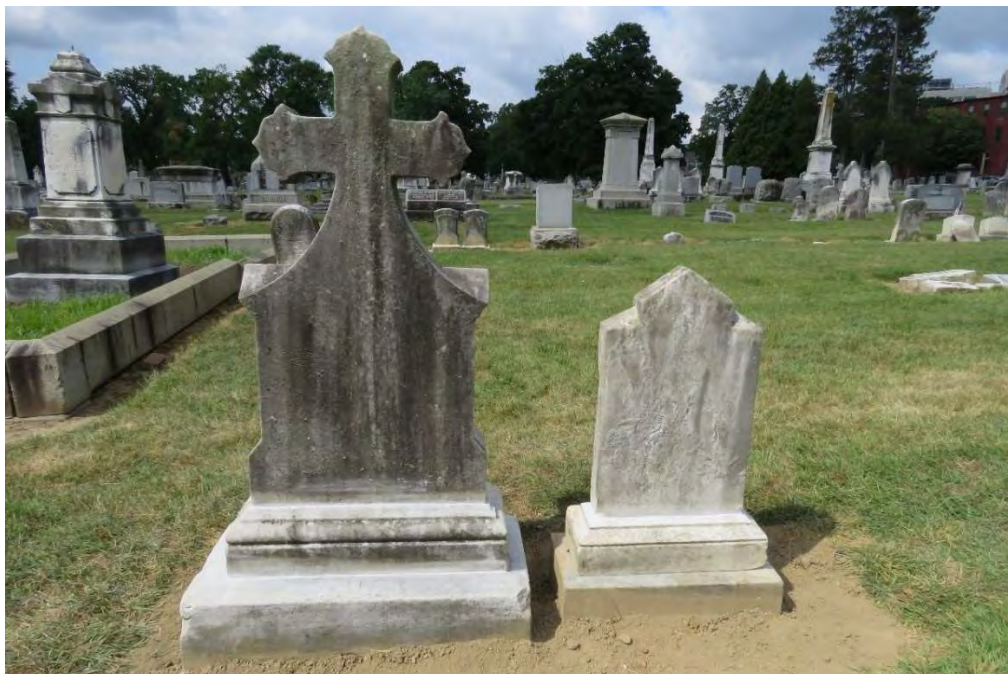
Stone #2 Reset on Bed of Drainage Rock

St. Mary's Cemetery, Lancaster, Pennsylvania – Section 2, Row 6, Gravestones 17 & 18

O As Left Photos



Front

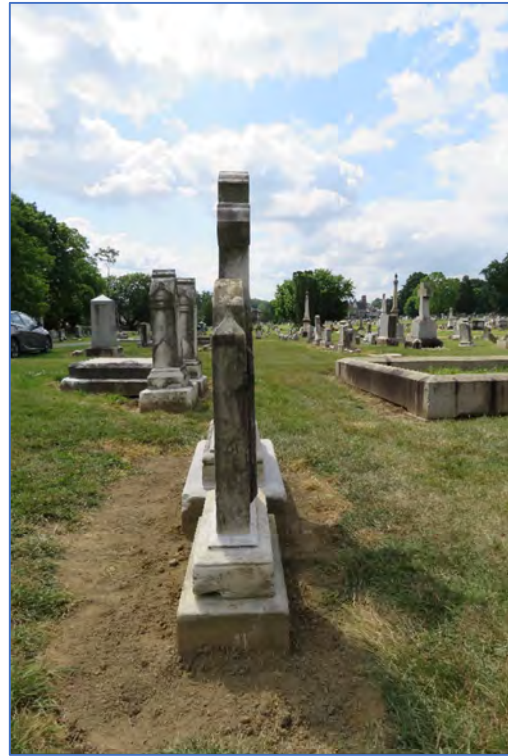


Back

St. Mary's Cemetery, Lancaster, Pennsylvania – Section 2, Row 6, Gravestones 17 & 18



Right Side



Left Side

O Final Cleanup

All equipment was removed from the site and the area policed for any trash.

O GROUND MARKER

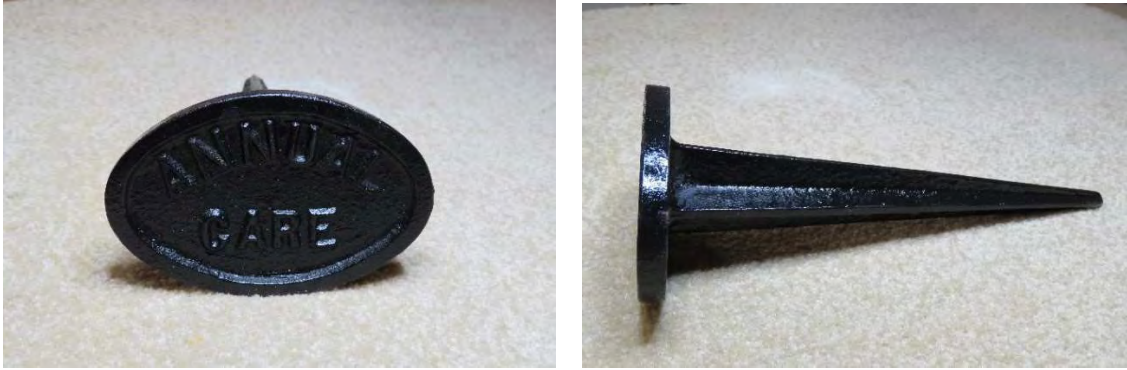
As mentioned, during the excavation of Lydia Hamilton Smith's gravestone base, a metal ground marker stating "ANNUAL CARE" was discovered in the ground at the back center of the base. The ground marker was cleaned with water and the rust removed with five applications of Rust-Oleum Rust Dissolver Jelly. The marker was then painted with Krylon Fusion Gloss Black spray paint. The marker was then placed in the ground at the back center of Lydia Hamilton Smith's gravestone base where it was found. Below are photos of this process.



As Found Ground Marker



Ground Marker After Rust Removed



Ground Marker Painted



Ground Marker Replaced

O GROUND TREATMENT

It is important that the ground surrounding the two gravestone bases be stabilized to minimize future subsidence of the gravestones. This can be accomplished by preparing the ground with top soil and planting vegetation, e.g., local grass seed, creeping time, etc., on all four sides of each gravestone base.

The use of any herbicide should be prohibited. The ground surrounding the two gravestones should be maintained in a manner that keeps the vegetation well-trimmed.

Follow-up

- The mortar will completely set in three days. After three days, check mortar set.
 - 6 June 2023 – The stones were checked. Both were stable and level.
- After one year, check level of both bases and adjust as necessary.
- The work is under warranty for seven years.

Sign Installation

A sign describing the two gravestones was installed following the conservation and restoration work described above. The installation occurred on 13 June 2023 as follows.

- **Weather:**

Day 1: Hi: 78°F; Lo: 77°F; No rain; Wind: W 7-14 mph.

Day 2: Hi: 77°F; Lo: 55°F; Morning rain; Wind: SW 8-16 mph.

Day 3: Hi: 83°F; Lo: 58°F; No rain; Wind: WNW 7-14 mph.

- **Installation:**

- The sign was assembled and the three legs held in place to mark their locations in the soil.
- Three holes were dug to approximately 30" depth.
- A 4" gravel base of chipped mini-marble was placed in each hole.
- An 8" diameter Quikrete concrete form was placed in each hole. Each form was ~1.3' long.
- The sign assembly was inserted into the forms, centered to the gravestones, leveled and staked in place. The sign was placed as follows.
 - Top of the sign was 11" from the base of Lydia's gravestone.
 - Bottom of the center of the sign was 5" from ground level.
 - Top of the center of the sign was 15" from the ground.
- One 80 lb. bag of Quikrete High Strength Concrete was mixed and inserted into each form. The excess was used to support the form in the hole.
- Covered unit with a tarp.
- After 24 hours, the stakes were removed and holes filled with removed soil.

St. Mary's Cemetery, Lancaster, Pennsylvania – Section 2, Row 6, Gravestones 17 & 18



Sign Fitted in to Holes



As Left Photo

**Attachment A - Saint Mary's Cemetery Field Survey Sheet
(Section 2, Row 6, Gravestone 18)**

Recorder Andre Dominguez Date 9 Nov 2022.

Gravestone Name (Last, First, Middle): Smith, Lydia Hamilton.

Style/Type:

Stylized Cross Style with tier and base

Material:

Marble

Decorative Carving/Motif(s):

Stylized Cross

As-Found Condition:

- | | | |
|---|---|--|
| <input type="checkbox"/> No Issues | <input type="checkbox"/> Delaminated | <input type="checkbox"/> Broken/Cracked |
| <input checked="" type="checkbox"/> Unstable | <input type="checkbox"/> Sugaring | <input type="checkbox"/> Portions Missing |
| <input checked="" type="checkbox"/> Dirty | <input type="checkbox"/> Previous Repair | <input checked="" type="checkbox"/> Leaning (left) <u>5°</u> |
| <input type="checkbox"/> Biological: lichen, moss | <input type="checkbox"/> Root/Tree Bound | <input checked="" type="checkbox"/> Tilting (front) <u>12°</u> |
| <input type="checkbox"/> Chemical: Calcite | <input type="checkbox"/> Toppled | <input type="checkbox"/> Encased in Concrete |
| <input type="checkbox"/> Rust Marks | <input checked="" type="checkbox"/> Weathered | <input type="checkbox"/> Other: _____ |
| <input type="checkbox"/> Mowing Damage | <input checked="" type="checkbox"/> Sunken | |

Additional Details:

Die: Loose in the tier base, it can be moved slightly with mild force. Cracking found, front and back at the two pin locations.

Tier: It has slid off base 1½". Cracking found at all pin locations. Right side has a quartz inclusion (4"x2"), chip missing from right front corner (~½"). There is a quartz inclusion on the front right side.

Base: It has sunk 3". Chips missing from each corner, largest is left rear (3"x2"). Minor ware on right face.

Dimensions: (in inches)

Main Body: (Die)	Height:	<input type="text" value="49.5"/>	Width:	<input type="text" value="25.75"/>	Thickness:	<input type="text" value="6.75"/>	Weight:	<input type="text" value="634 lb"/>
Tier:	Height:	<input type="text" value="7.5"/>	Width:	<input type="text" value="30.5"/>	Length:	<input type="text" value="10.75"/>	Weight:	<input type="text" value="242 lb"/>
Base:	Height:	<input type="text" value="12"/>	Width:	<input type="text" value="32.5"/>	Length:	<input type="text" value="17.75"/>	Weight:	<input type="text" value="682 lb"/>

Stone Carver's name: Haldy

Stone Source: Unknown

Orientation (direction engraving is facing): Compass S-W / 240°

**Attachment A - Saint Mary's Cemetery Field Survey Sheet
(Section 2, Row 6, Gravestone 18)**

Engraving Condition: Rahn's Visual Weathering Class

- 1 2 3 4 5 6

Slightly rounded showing evidence of some removal of grains. Still legible and clear.

Carving Style: Incised (carved into surface) Raised

Lettering Style: _____ Block & Roman _____.

Lydia Hamilton – Block style, all caps (H = 1.4", D = 0.07")
 Relict of – Block style; cap (H = 1.0", D = 0.62"), lower case (H = 0.6", D = 0.62")
 Jacob Smith – Block italics style, all caps (H = 0.8", D = 0.06")
 Hon. Thaddeus Stevens – Block style, all caps (H = 0.85", D = 0.042")
 Remainder of text – Roman style, upper case (H = 0.8", D = 0.7"), lower case (H = 0.5", D = 0.07")

Inscription (line-by-line, exactly as carved including name and epitaph):

LYDIA HAMILTON Relict of <i>JACOB SMITH</i> For many years the trusted House keeper of HON. THADDEUS STEVENS.	Born at Gettysburg, Penna. On St. Valentine's day. 1813. Died at Washington, D. C. On St. Valentine's day. 1884.
--	---

Describe Any Treatment Details (straightening work, type and amount of stone used, etc.):

Plan:

- Raise the base to ground level by inserting ½" mini-marble chips.
- Repair pins as necessary.
- Make entire unit plumb and center tier on base.
- Right edge of base should be 69" from the left edge of the two son's gravestone.

Permission to do work given by Patrick Eichelberger, Saint Mary's Cemetery Manager, documented in agreement dated 3 March 2023. (See Attachment C for copy.)

**Attachment A - Saint Mary's Cemetery Field Survey Sheet
(Section 2, Row 6, Gravestone 18)**

Weight Calculation Sheet

NOTE: In Die calculation below, use 75% of volume to account for cross.

Die Dimensions (not including tier and base):

Height: 49.5"

Width: 25.75"

Thickness: 6.75"

4.98 ft ³
847 lb

Tier:

Height: 7.5"

Width: 30.5"

Length: 10.75"

1.42 ft ³
242 lb

Base Dimensions:

Height: 12"

Width: 32.5"

Length: 17.75"

4.01 ft ³
682 lb

Conversions: (1,728 in ³ /ft ³) (170 lb/ft ³ for marble & granite)
--

Total Weight: 1,411 lb

Total Height: 68" or 5.67 ft

Page intentionally blank.

**Attachment B - Saint Mary's Cemetery Field Survey Sheet
(Section 2, Row 6, Gravestone 18)**

Recorder Andre Dominguez Date 9 Nov 2022.

Gravestone Name (Last, First, Middle): Smith, Isaac & William.

Additional Names(s) (attach individual inscription page(s): _____.

Style/Type:

Pinion with Angled Checks, with tier and base

Material:

Marble

Decorative Carving/Motif(s):

Simple small cross (2.3" across and 2.7" high) on a raised religious plaque outline with a wavy bottom

As-Found Condition:

- | | | |
|---|---|--|
| <input type="checkbox"/> No Issues | <input type="checkbox"/> Delaminated | <input type="checkbox"/> Broken/Cracked |
| <input checked="" type="checkbox"/> Unstable | <input type="checkbox"/> Sugaring | <input type="checkbox"/> Portions Missing |
| <input checked="" type="checkbox"/> Dirty | <input type="checkbox"/> Previous Repair | <input checked="" type="checkbox"/> Leaning (right) <u>6</u> ° |
| <input type="checkbox"/> Biological: lichen, moss | <input type="checkbox"/> Root/Tree Bound | <input checked="" type="checkbox"/> Tilting (front) <u>5</u> ° |
| <input type="checkbox"/> Chemical: Calcite | <input type="checkbox"/> Toppled | <input type="checkbox"/> Encased in Concrete |
| <input type="checkbox"/> Rust Marks | <input checked="" type="checkbox"/> Weathered | <input type="checkbox"/> Other: _____ |
| <input type="checkbox"/> Mowing Damage | <input checked="" type="checkbox"/> Sunken | |

Additional Details:

Die: Loose tier in base, it can be moved slightly with mild force and is heavily weathered. Right side rear corner bottom – chip (1¼"x½") missing.

Tier: Has slid off base 2"; Left side bottom corner – chip (3"x2"x1") missing.

Base: Has sunk 6.5".

Dimensions: (in inches)

Main Body: (Die)	Height:	<input type="text" value="29.75"/>	Width:	<input type="text" value="17.875"/>	Thickness:	<input type="text" value="4.75"/>	Weight:	<input type="text" value="248"/>
Tier:	Height:	<input type="text" value="6.25"/>	Width:	<input type="text" value="23"/>	Length:	<input type="text" value="9"/>	Weight:	<input type="text" value="133"/>
Base:	Height:	<input type="text" value="8"/>	Width:	<input type="text" value="26"/>	Length:	<input type="text" value="12"/>	Weight:	<input type="text" value="245"/>

Stone Carver's name: Unknown Stone Source: Unknown

Orientation (direction engraving is facing): Compass S-W / 240°

**Attachment B - Saint Mary's Cemetery Field Survey Sheet
(Section 2, Row 6, Gravestone 18)**

Engraving Condition: Rahn's Visual Weathering Class

1 2 3 4 5 6

Lettering disintegrating. Lettering still just about legible, but now almost indistinguishable from the surface of the gravestone.

Carving Style: Incised (carved into surface) Raised

Lettering Style: _____ Block _____.

Isaac and William – Block, all caps (H = 1.27", D = 0.043")

Remainder of text – Style not discernable (Upper case, H = 0.8", D = 0.043", lower case, H = 0.5", D = 0.043")

Inscription (line-by-line, exactly as carved including name and epitaph):

ISAAC
Died April 7, 1884
In the 37th year
of his age
WILLIAM
Died May 10, 1860
In the 25th year
of his age.
Sons of
Jacob & Lydia H.

Describe Any Treatment Details (straightening work, type and amount of stone used, etc.):

Plan:

Reset gravestone by raising the base to ground level by inserting ½" mini-marble chips.
Stabilize die.
Make entire die/tier unit plumb and center on base.
Left edge of base should be 69" from the right of Lydia's gravestone.

Permission to do work given by Patrick Eichelberger, Saint Mary's Cemetery Manager, documented in agreement dated 3 March 2023. (See Attachment C for copy.)

**Attachment B - Saint Mary's Cemetery Field Survey Sheet
(Section 2, Row 6, Gravestone 18)**

Weight Calculation Sheet

Die Dimensions (not including base):

Height: 29.75"

Width: 17.875"

Thickness: 4.75"

1.46 ft ³
248 lb

Tier:

Height: 6.25"

Width: 23"

Length: 9"

0.75 ft ³
133 lb

Base Dimensions:

Height: 8"

Width: 26"

Length: 12"

1.44 ft ³
245 lb

Conversions: (1,728 in ³ /ft ³) (170 lb/ft ³ for marble & granite)
--

Total Weight: 626 lb

Total Height: 41" or 3.42 ft

Page intentionally blank.

Attachment C – Permission To Do Work

PERMISSION TO DO WORK

DATE: 3 April 2023

LOCATION: Saint Mary Cemetery
Lancaster, Pennsylvania

GRAVESTONES:

1. Lydia Hamilton Smith
2. William & Isaac Smith, Lydia's two sons

SAINT MARY CEMETERY MANAGER: Patrick Eichelberger

PERSON IN CHARGE OF THE WORK: Andre Dominguez

WORK DISCRIPTION:

The Saint Mary Cemetery Manager gives permission to the person in charge of the work to perform the following work on the gravestones listed above. See attachment for additional details.

1. Repair gravestones for stability, if needed.
2. Reset both gravestones plum & level.
3. Install commemorative marker in front of both gravestones. The distance from the base to the front of the marker will not exceed 12 inches.

Saint Mary Cemetery Manager: _____

DATE: 4/3/23

Person In Charge of the Work: A. Dominguez

DATE: 4/3/2023

Attachment C – Permission To Do Work

Final Plan Stabilization of gravestones & installation of one 65" x 12" commemorative marker Saint Mary Cemetery, Lancaster, PA

William & Isaac Smith and their mother, Lydia Hamilton Smith

1835-1860 1837-1884 1815-1884

Their gravestone inscribed:
ISAAC - Died April 7, 1864,
In the 27th year of his age.
WILLIAM - Died May 10, 1865,
In the 25th year of his age.
SONS OF JACOB & LYDIA H. SMITH.

Her gravestone inscribed:
LYDIA HAMILTON
WIFE OF JACOB SMITH
For many years the United
Member of
NOW THAKERDAE STEVENS.
Born at Philadelphia, Penna.,
on St. Valentine's Day, 1815.
Died at Washington, D.C.,
on St. Valentine's Day, 1884.

*...a remarkably intelligent woman,
of generous disposition, and was well
and favorably known.*

Obituary, Evening Star, Washington D.C. February 15, 1884

Sponsored by: 

Prepared on behalf of LancasterHistory and African American Historical Society of South Central Pennsylvania
By Randolph Harris and Andre Dominguez, March 17, 2023

Existing conditions



Attachment C – Permission To Do Work

